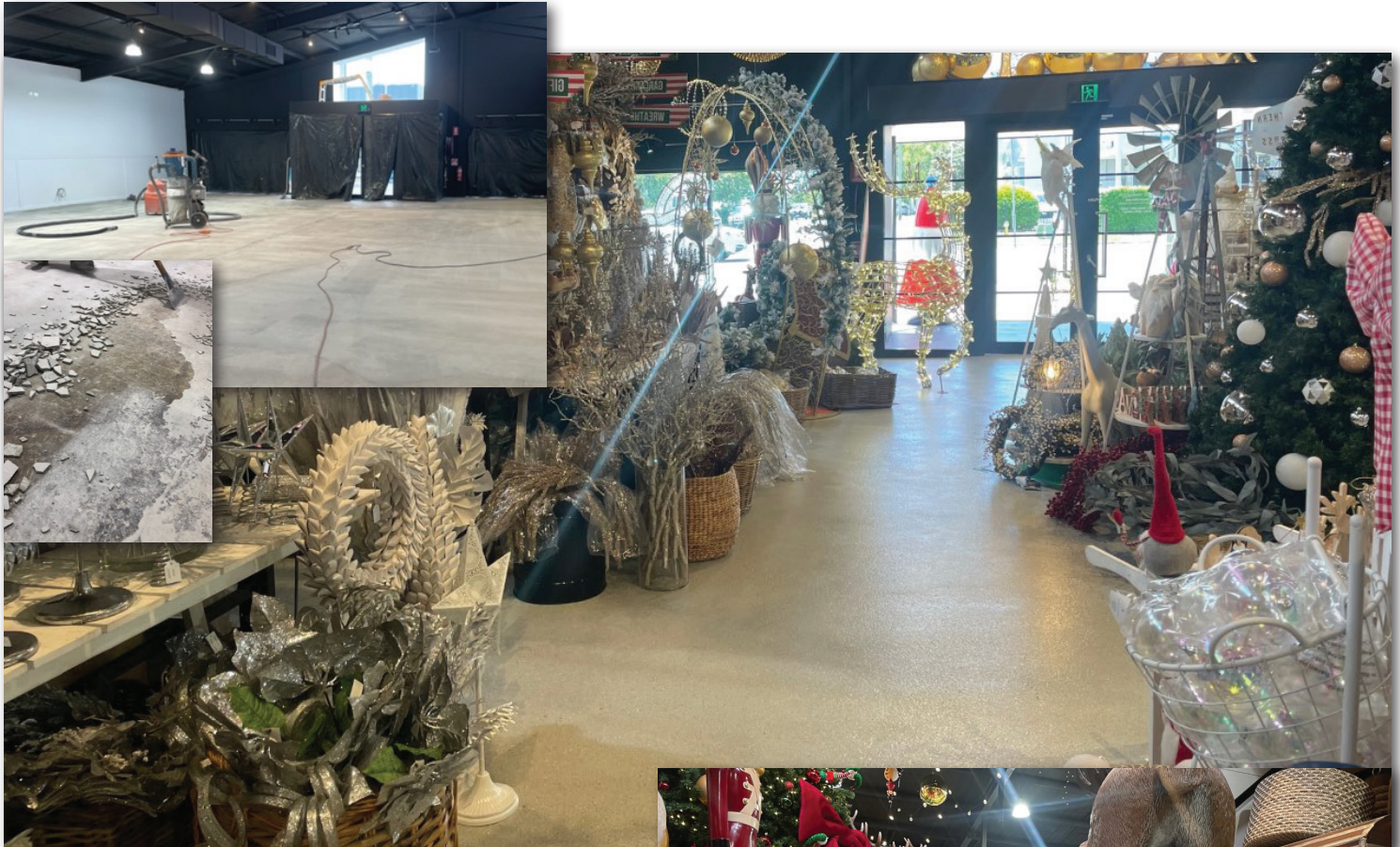


## Case History



### PROJECT SUMMARY

<b>Client</b>	The Prop House
<b>Location</b>	Coorparoo, Queensland
<b>Colour</b>	Baltic
<b>Area</b>	450m <sup>2</sup>
<b>Installer</b>	Tough Floors



### COMMENTS

- The concrete in the old building was laid decades ago and had been exposed to several different businesses during that time, including a mechanical workshop. As a result some parts of the slab were unfit for flooring and needed replacing, with up to 75mm removed and reinstated in these areas.
- While the grinding phase of surface preparation went as expected, the patching of cracks and other surface defects proved to be challenging. Unexplained adhesion issues between the primer and some of the patched areas were particularly troublesome, however these were able to be overcome through re-application measures.
- After the integrity of the subfloor work had been tested and approved, a Baltic Resin Granite™ decorative flake system was applied with a non-slip particle added to the topcoat for improved slip resistance.